

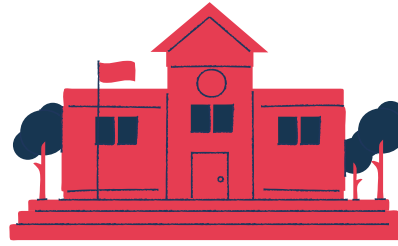
Autism and Home



700,000k

It is estimated that around 700,000 people are on the autism spectrum in the UK, including one in 100 children,

**1
100**



646 state-funded and non-maintained special schools approved for Autistic Spectrum Disorder provision type.

646



x4

Four times as many boys are diagnosed than girls.

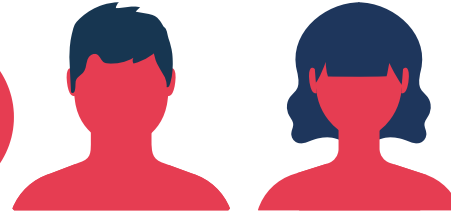


Of those with an EHC plan, Autistic Spectrum Disorder remains the most common primary type of need with 29% of pupils with an EHC plan having this primary type of need.

37%

Autistic Spectrum disorder is the most prevalent primary type of need across ages 4 to 17 for those pupils with an EHC plan. This is highest at age 4, with 37%.

33%



In January 2019, Autistic Spectrum Disorder is the most prevalent primary type of need for both boys (33%) and girls (18%) with an EHC plan.

143,500k

In 2019, the DfE recorded 143,500 children who had autism stated as their primary education need.

+2



Every three children who have been diagnosed with autism there are two more who have the condition but have not been given a formal diagnosis. This would mean that there are an additional 300,000 children in the UK who have not yet been identified.

3x

Exclusion from school is three times more likely for autistic children.

300,000k

